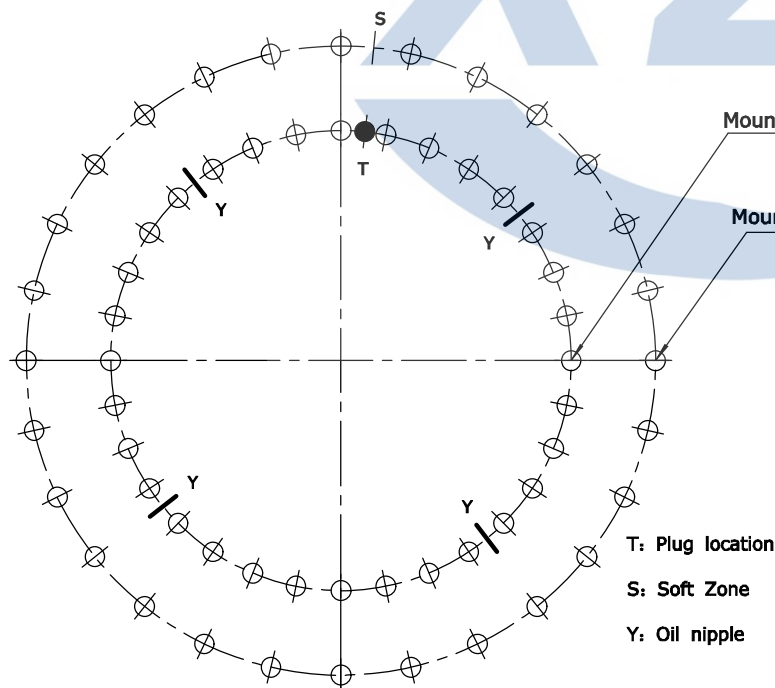
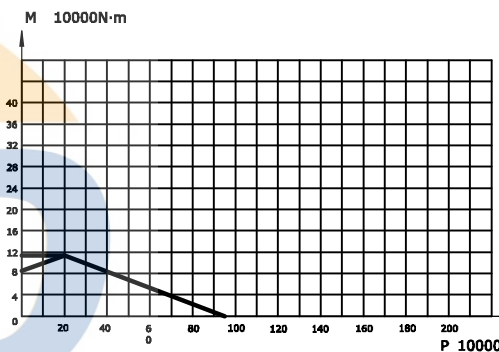
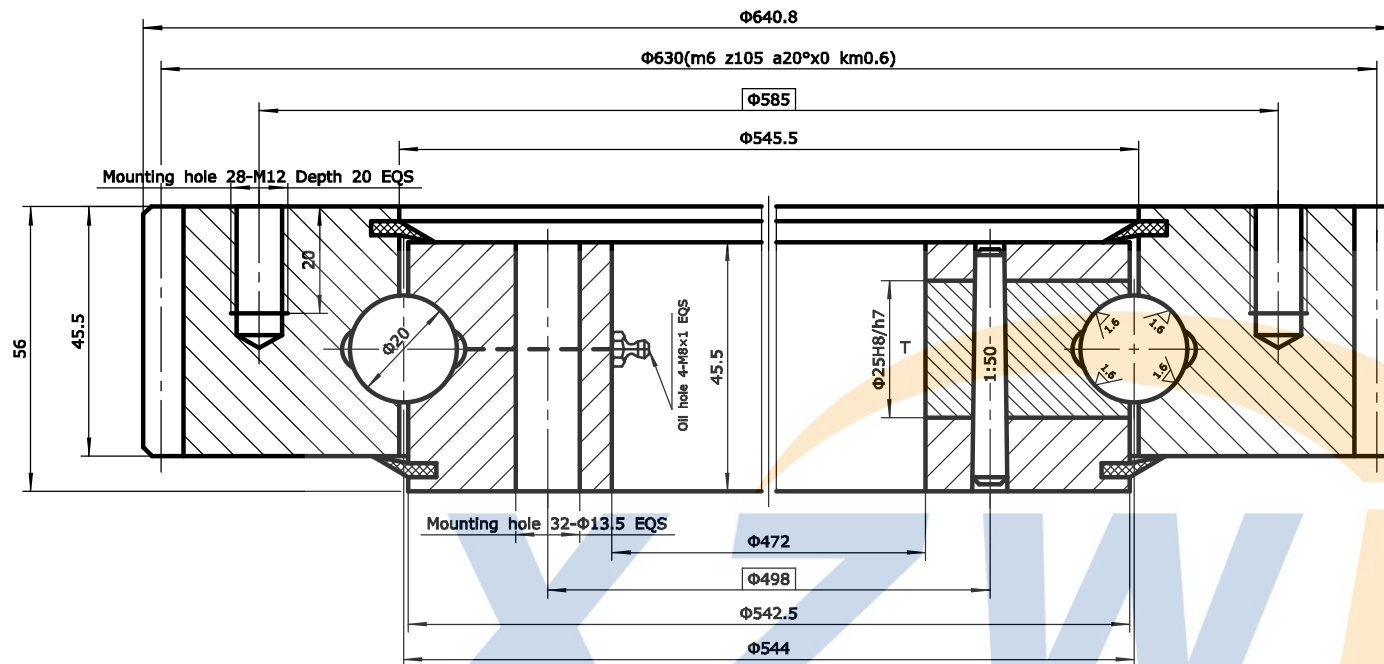


Module	m	6
Teeth no.	z	105
Teeth pressure angle	$\alpha$	20°
Modification coefficients	x	0
Reduction coefficients	km	0.6
Precision(GB10095-88)		10
Average base tangent length and deviation	W	212.52 <sup>-0.35</sup> <sub>-0.49</sub>
Spanned tooth count.	k	12
Base tangent length change tolerances	FW	0.13



Mounting hole 32-Φ13.5 EQS

Φ0.5 A

Mounting hole 28-M12 Depth 20 EQS

Φ0.5 A

U.O.N  $\nabla$  6.3


Notes:

1. Unspecified chamfer: 1.0×45°  
Through hole chamfer: 1.0×45°  
Threaded hole chamfer: 2.0×45°  
Edges chamfer
2. Raceway of Inner & outer ring Induction hardened, hardness: 55~62HRC  
Depth: ≥3.0mm
3. Inner & outer ring quenched & tempered, hardness: 207~262HB
4. Radial clearance: 0.04~0.25 mm  
Axial clearance: 0.04~0.25 mm

T: Plug location

S: Soft Zone

Y: Oil nipple

No.	Standard	Component	Material	Model	Qty	Remark
08	HG/T2811	Seals	NBRI-3	W17	2	
07	GB117-76	Pin	CN45	Φ8×40	1	
06		Plug	CN45	Φ25	1	
05	JB/T7940.7	Oil nipple	Component	M8×1	4	
04	GB/T699	Inner ring	50Mn		1	
03	GB/T308	Ball	GCr15	19.844	70±1	
02	HG/T2349	Spacer	Nylon	D20	70±1	
01	GB/T699	Outer ring	50Mn		1	
		Model	WD-061.20.0544	Drawing		Weight 43kg
		Name	Slewing Bearing	Qty		Scale
		Material	50Mn	Total 1 page		the 1st page
Design	Standard	 XUZHOU WANDA SLEWING BEARING CO.,LTD Tel: +86 516 83309366 Fax: +86 516 83915766 http://www.slew-bearing.com				
Check						
Process	Approve					
Date						